

601/65 Tumbalong Boulevard Haymarket NSW

1  1 

Located in the most sought after complex of 'Darling One', this apartment boasts well-proportioned open plan designs with high ceilings and quality wooden floorboards, as well as a large bedroom with wall-to-wall wardrobe!

Other features:

- Modern kitchen layout with MIELE gas cooktop
- A built-in fridge
- Central control air conditioning
- Quality european appliances
- Internal laundry cabinet
- Security video intercom and swipe access.

Located just meters from parks, cafes, restaurants, Central and Town Hall Station, and Sydney's CBD. This apartment is also conveniently close to Cockle Bay Wharf and Darling Harbour's exciting tourist attractions and entertainment venues, including the recently built International Conference Centre. Additionally, the vibrant areas of

View : <https://www.legendproperty.com.au/sale/nsw/sydney-city/haymarket/residential/apartment/7582215>



Xudong (Thomas) Zhang
0405 274 048

Darling One

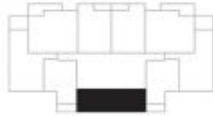
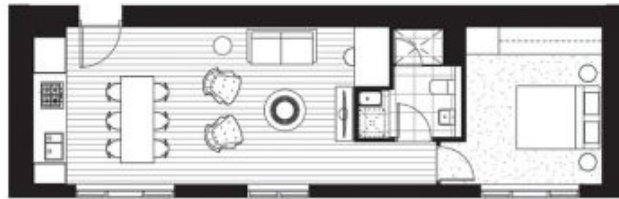
SKYHOMES & APARTMENTS

LAYOUT PLAN

apartment type H
apartment no. 5H, 6H, 7H, 8H, 9H, 10H, 11H, 12H, 13H, 15H,
16H, 17H, 18H, 19H, 20H

bedrooms 1
apartment area 52 m²
balcony area 0 m²
total apartment area 52 m²

This plan is indicative than plan only, as of April 2019. This plan is a guide only and does not constitute an offer or a contract unless subject to completion with all plans and regulations approved from all relevant authorities. All areas, dimensions, materials and specifications shown are approximate and will be subject to survey on completion of construction. All details are subject to change without notice. Prospective purchasers are encouraged to view floor plan, elevations and visit the development before purchase.



DARLING SQ.
STREET

**Lend Lease**