

Level 16/74/398-408 Pitt Street Haymarket NSW

3  2  1 

Nestled on the 16th floor of Pitt Street, this exceptional 3-bedroom apartment boasts an east and north-facing orientation, offering panoramic district views. The apartment features solid brick construction, fully renovated kitchens and bathrooms, and is conveniently located within close proximity to three major train stations: Central, Town Hall, and Museum. Additionally, three tram stations are within easy reach, and there's a metro station on Pitt Street.

View : <https://www.legendproperty.com.au/sale/nsw/sydney-city/haymarket/residential/apartment/7764049>

This prime location places you within walking distance of some of Sydney's most iconic landmarks, including Darling Harbour, Hyde Park, Chinatown, and Pitt Street Mall. Revel in the ultimate city lifestyle with quick access to Sydney Uni and UTS, both just a short stroll away.



Xudong (Thomas) Zhang
0405 274 048



Sze Chi (nettie) Lee
0478804430

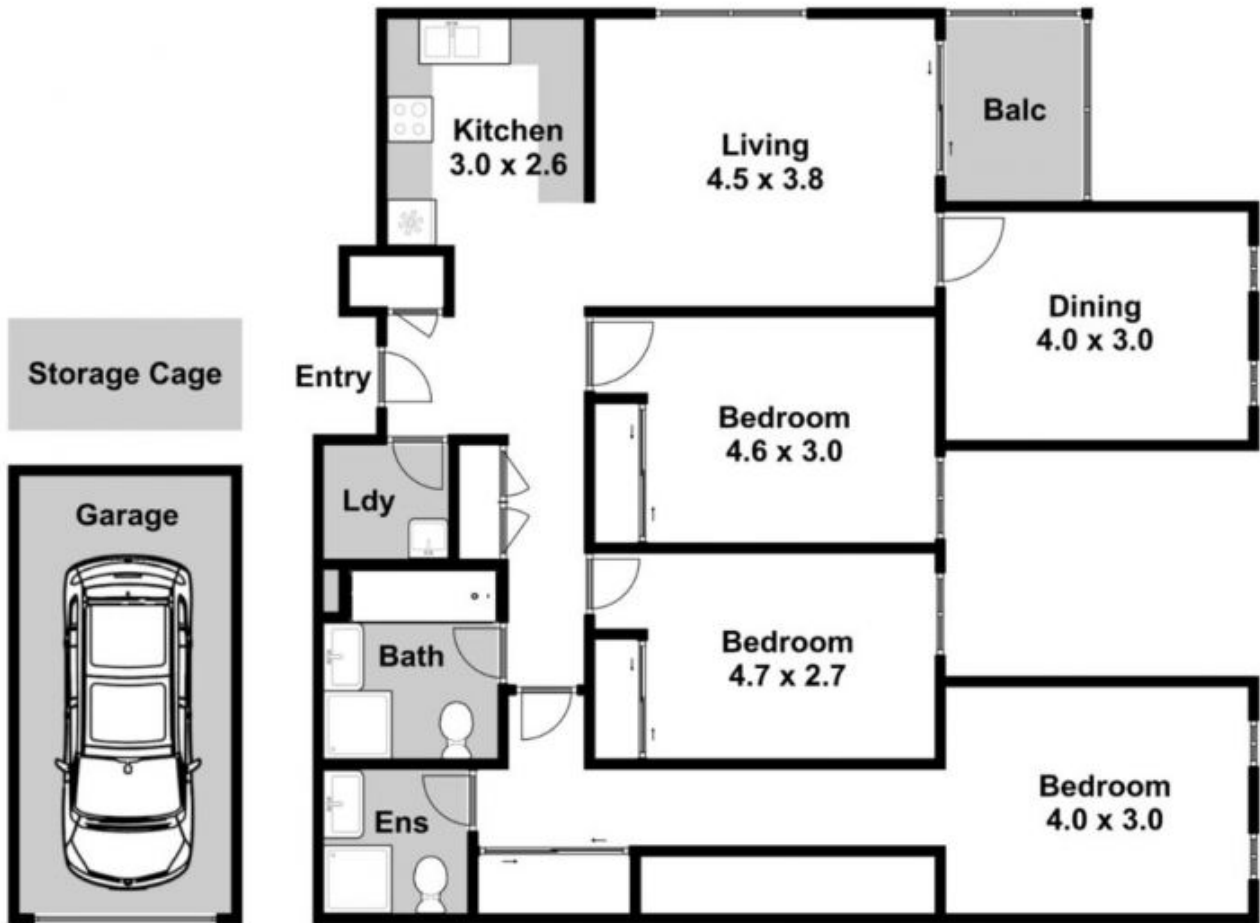
Key Features:

Level 16, 74/398-408 Pitt Street, Haymarket

Please note:

Floorplan measurements are a guide only.

All dimensions are approximate in their distance and volume.



-  3
-  2
-  1