



5 Emu Street West Ryde NSW

5 🏠 4 🚗 2 🚗

This large 5-bedroom house sits next to the Brush Farm Park, well-maintained, with only a short drive to schools, train station and shops. With an exceptional opportunity to explore the possibilities and enormous potential, occupying 1,290 sqm with elevated leafy views, this two-level house presents a rare chance to rebuild your dream home or Duplex (STCA).

Price : \$ 2,200,000
Building Size : 280 sqm
Land Size : 1290 sqm
View : <https://www.legendproperty.com.au/sale/nsw/northern-suburbs/west-ryde/residential/house/7777012>

Property Highlights

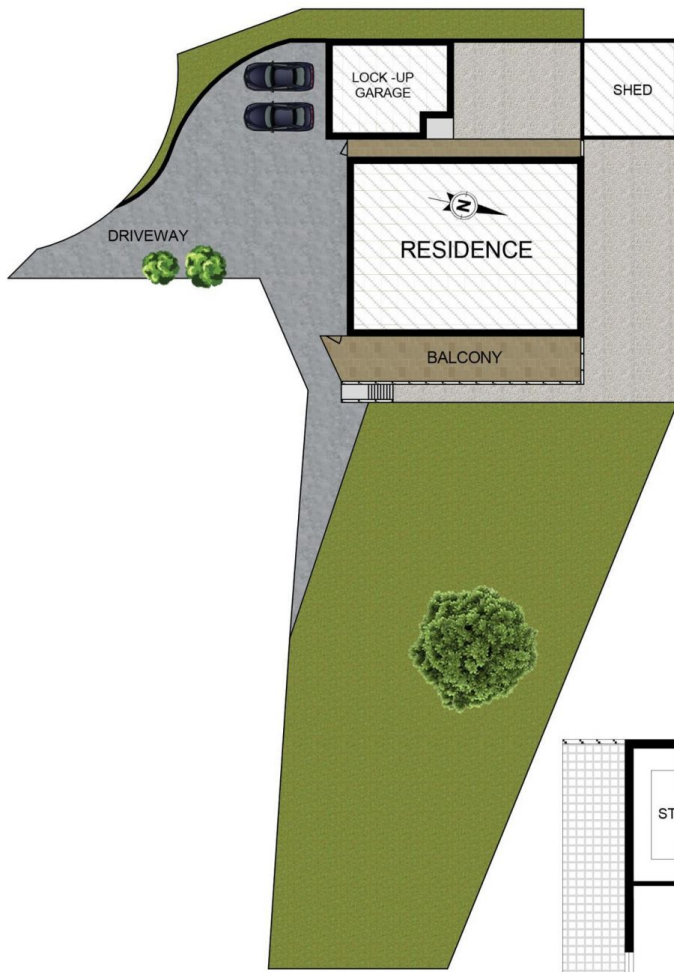
- North facing, having Brush Farm Park in your backyard, land size 1290 sqm
- Quietly located at the end of a leafy cul-de-sac, floor area 280 sqm
- Mediterranean style, double brick, upper level has a bright three-bedroom home, well-maintained
- Lower level has a two-bedroom home facing east, with private entrance, separate from the upper level



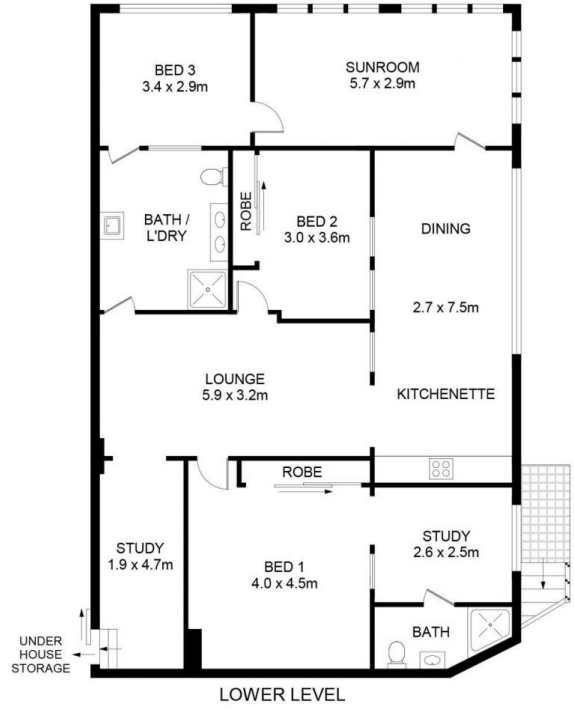
Wenyng (Wendy) Yu
0452001920



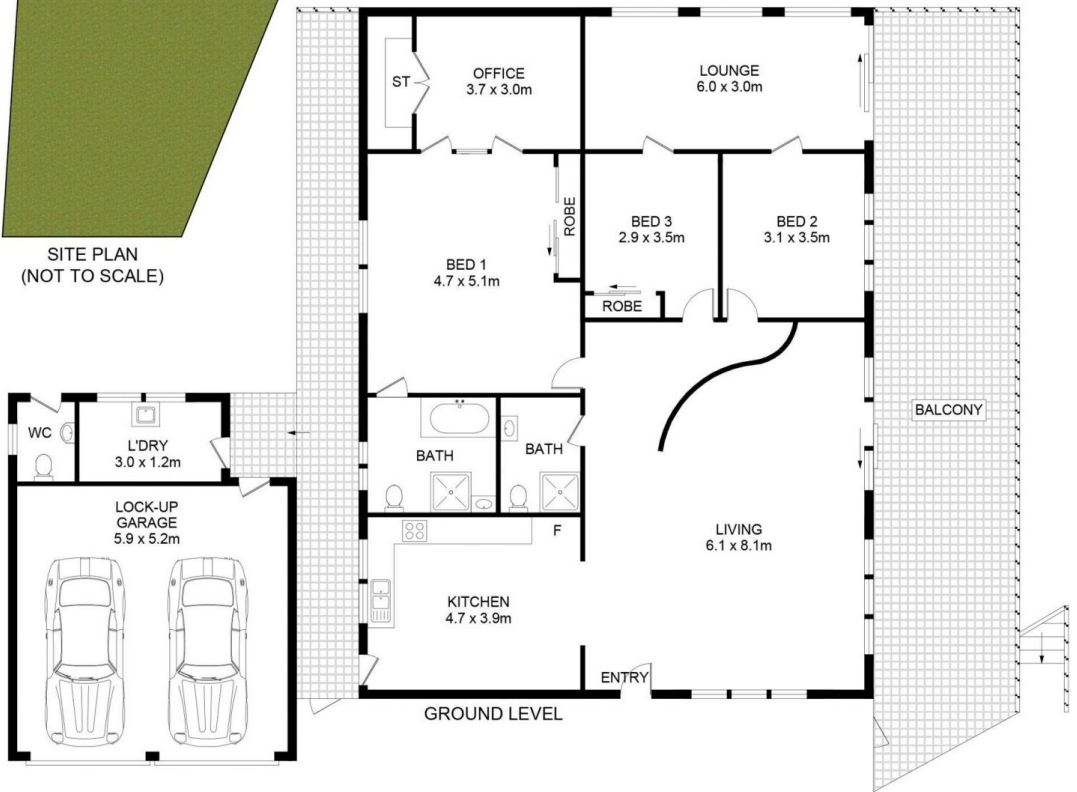
Hui (henry) Chen
0410029992



SITE PLAN
(NOT TO SCALE)



LOWER LEVEL



GROUND LEVEL



5 Emu Street, West Ryde

DISCLAIMER: No liability for the accuracy of details contained within our floor plans. All plans are drawn and also checked to the best of our ability, however information contained in our floor plans such as area calculations are approximate, and have not been surveyed or drawn to scale. Our floor plans are for representational purposes only and should be used as such. Do not attempt to refer to our floor plans for structural or detailed information.