



707/29 East Street Granville NSW

Discover Your Vibrant Urban Village at Granville Place. This exciting village precinct brings a strong sense of community to Granville, offering residents a dynamic place to live, shop, and relax. Developed by SHOKAI Ausbao, the creators of Crowne Plaza Sydney Darling Harbour, Granville Place is a thriving urban village.

Constructed by the renowned builder PARKVIEW Constructions, this development offers top-tier quality. You'll enjoy:

- Easy access to shopping with a lift ride.
- A one-stop shopping destination.
- Only one minute away from outdoor recreational activities.
- Steps to the train station for an effortless commute.
- A quick train ride to Parramatta Station.
- A short walk to the library and swimming pool.

1  1  1 

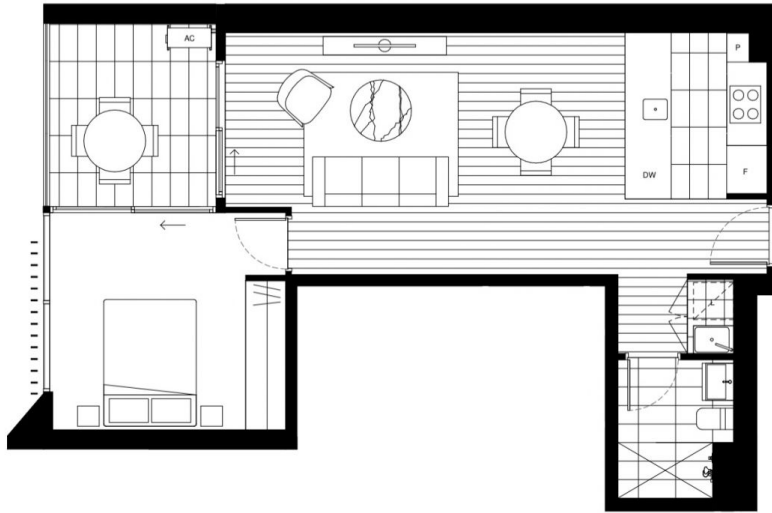
Price : Contact Agent
View : <https://www.legendproperty.com.au/sale/nsw/parramatta/granville/residential/apartment/7810071>



Ka Chun (joe) Lai
0466666563



Even Ang
0423438362



BUILDING
Acacia
 TYPE 1C

**1 BEDROOM
 1 BATHROOM**

A507, A607, A707, A807, A907,
 A1007, A1107, A1207, A1307,
 A1407, A1507, A1607, A1707,
 A1807, A1907, A2007

INTERNAL AREA	52M ²
EXTERNAL AREA	7M ²
TOTAL AREA	59M ²

