

53/17-25 Boundary Street Roseville NSW

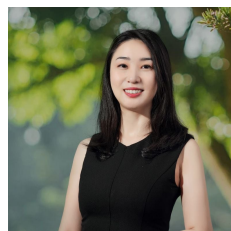
1  1  1 

Thoughtful light-filled living spaces and clever designs maximize space and create calm, effective, open-plan living environments. Tree filled private courtyards ensure a seamless yet luxuriant vibe, and an uncompromised lifestyle. Communal areas abundant in foliage provide an elegant framework for residents to cherish every day, as they move through the building.

Key Features:

- North facing, spacious covered alfresco terrace
- Luxury stone-topped, gas kitchen, Miele appliances
- Spacious beds with built-in robes, master with ensuite
- Engineered oak flooring, ducted air-conditioning
- Contemporary security building with lift access
- 1 secure car space, 1 storage cages
- Approx. 5 mins walk to Roseville Station and Village

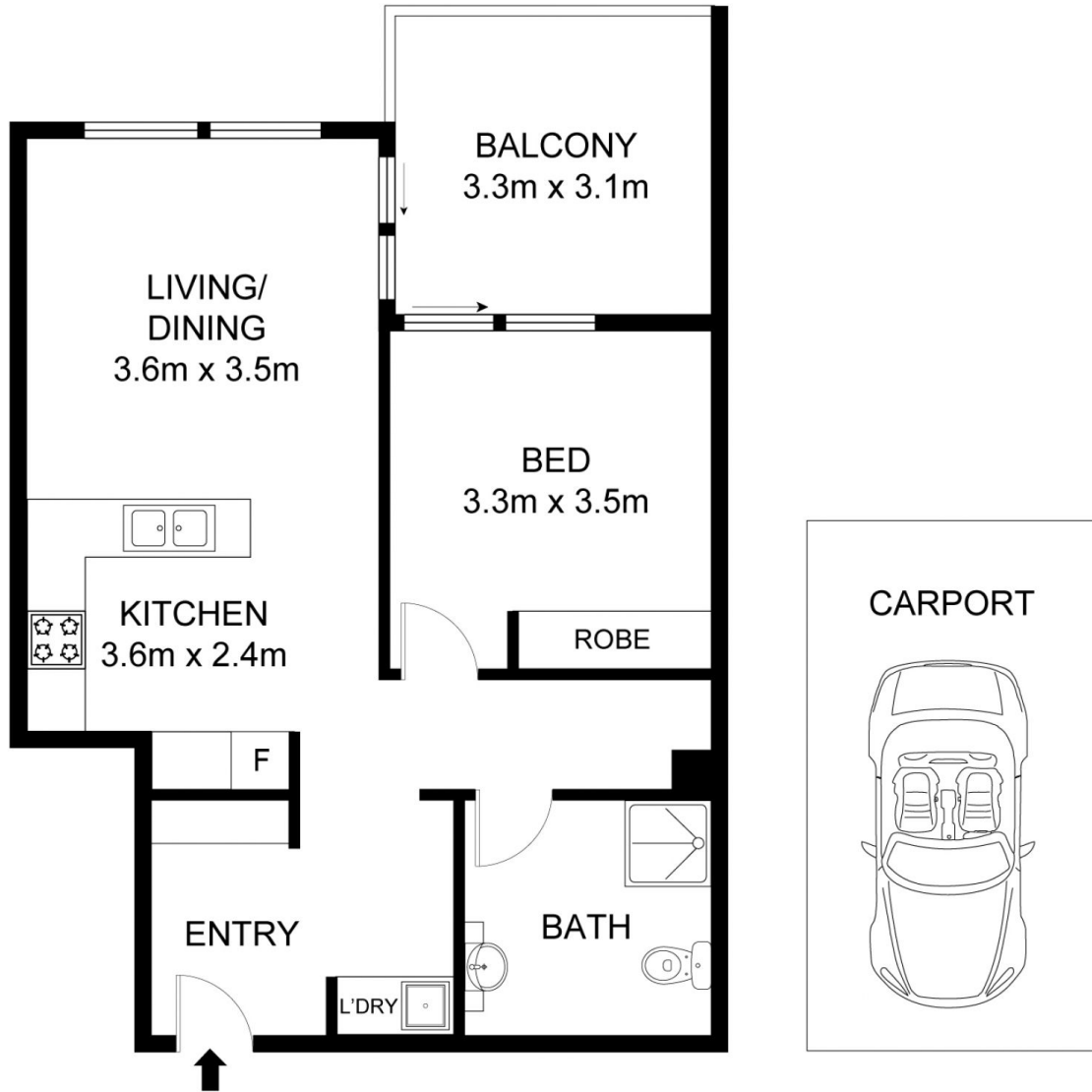
View : <https://www.legendproperty.com.au/sale/nsw/north-shore-upper/roseville/residential/apartment/7917421>



Min (Lily) Chang
0405 323 411



53/17-25 BOUNDARY STREET, ROSEVILLE



Int: 56 m²
 Ext: 10m²
 Total: 66 m²

THE ABOVE PLAN IS REPRESENTATION ONLY. ALL DIMENSIONS ARE APPROXIMATE SHOULD BE CHECKED ON SITE.
 NO RESPONSIBILITY IS TAKEN FOR ERROR, OMISSION OR MISSTATEMENT.