



## 2403/81 Harbour Street Haymarket NSW

2  2  1 

Darling Square is one of the Sydney's most walkable and connected new city neighbourhood at the centre of vibrant and exciting precinct. From the CBD and the Harbour, entertainment and education, leisure and life style, the best of Sydney living is right at your doorstep.

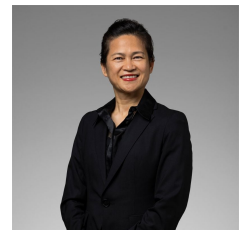
Developed by 5 Star world-class developer Lendlease, this apartment is close to a lot of attractions including: Darling Harbour, China Town, International Convention Centre, The theatre, Fish Market, Star Casino, Museums, hotels, cafes, dining and entertainment venues.

Easy access to famous universities and schools including UTS, USYD, UNSW, Sydney Grammar, St.Andrews School, and etc. Very convenient location, just 10 minutes walk to Central Station, 11 minutes walk to Town Hall Station, and the tram stop is just outside your door.

**Price** : High level with water view  
**View** : <https://www.legendproperty.com.au/sale/nsw/sydney-city/haymarket/residential/apartment/7946973>



**Xudong (Thomas) Zhang**  
 0405 274 048

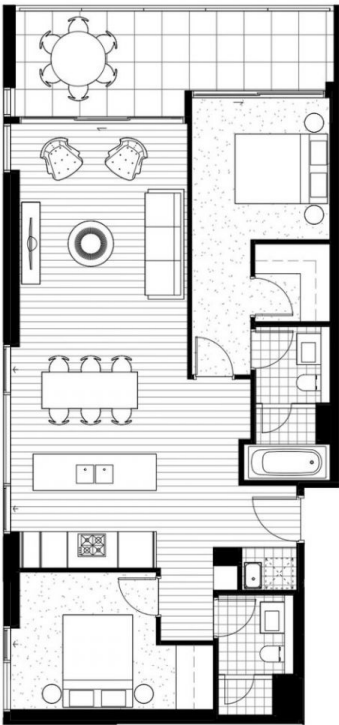


**Huiling (Cindy) Xu**  
 0416 920 948

APARTMENT TYPE REFERENCE	
APARTMENT TYPE	A
APARTMENT NO.	2403

BEDROOMS	2
APARTMENT AREA	84 m <sup>2</sup>
BALCONY AREA	14 m <sup>2</sup>
TOTAL APARTMENT AREA	98 m <sup>2</sup>

This plan is an indicative floor plan only, as at April 2015. This plan is a guide only and does not constitute an offer or a contract and is subject to compliance with all local and regulatory approval from all relevant authorities. All areas, diagrams, dimensions and specifications shown are approximate only and are subject to survey on completion of construction. All details are subject to change without notice. Prospective purchasers are encouraged to make their own assessments and seek their own professional advice.



DARLING SQ.  
SYDNEY

Lend Lease