



Level 28/2805/115-117 Bathurst Street Sydney NSW

1 🏠 1 🚗

Located in Sydney's tallest residential tower, the sought-after Greenland Centre, this luxury 1 bedroom apartment on the 28th floor offers breathtaking Sydney Tower views.

Price : Price Guide: \$1.1m-1.15m

View : <https://www.legendproperty.com.au/sale/nsw/sydney-city/sydney/residential/apartment/8229690>

This apartment features an east-facing living room and a bright and flexible study with floor-to-ceiling window: can be converted into a temporary bedroom. The interior is complemented by herringbone-engineered timber flooring and floor-to-ceiling windows, leading to a spacious balcony. Thoughtfully designed, the apartment includes a comfortable bedroom, a spacious bathroom, and ample storage space, combining functionality and elegance.



Sze Chi (nettie) Lee
0478804430

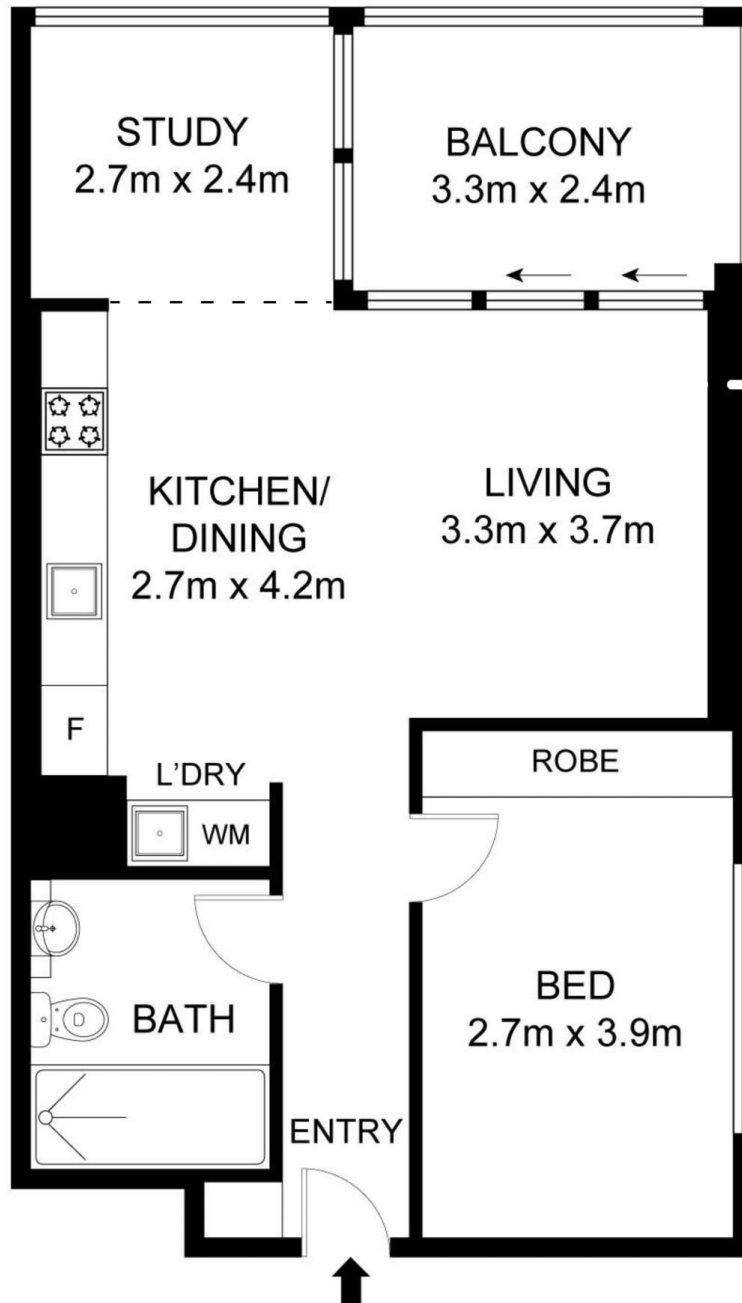


Xudong (Thomas) Zhang
0405 274 048

Features:

- flexible study with floor-to-ceiling window: can be converted into a temporary bedroom

2805/117 BATHURST STREET, SYDNEY



Int: 59 m²
Ext: 8 m²
Total: 67 m²

THE ABOVE PLAN IS REPRESENTATION ONLY. ALL DIMENSIONS ARE APPROXIMATE SHOULD BE CHECKED ON SITE.
NO RESPONSIBILITY IS TAKEN FOR ERROR, OMISSION OR MISSTATEMENT.