



### 14/10 Prospect Street Rosehill NSW

2  1  1 

Climb a set of private stairs and enjoy light, space and privacy in this charming top-floor unit, positioned just off arterial roads of Sydney. Occupying three sides of the building, this apartment captures excellent natural lighting and cross-breezes throughout the day. Featuring a brightly sunlit kitchen and a highly functional combined living and dining area that flows onto the north facing balcony, this space is perfect for energizing your mornings or unwinding in the evenings.

Rosehill Public School is just 100m down the road, making this unit perfect for growing families. With the local medical centre and shops just 10 minutes away, and located close to the M4 and the Parramatta CBD, everything you need is easily accessible by public transport or car.

**Price** : \$ 485,000

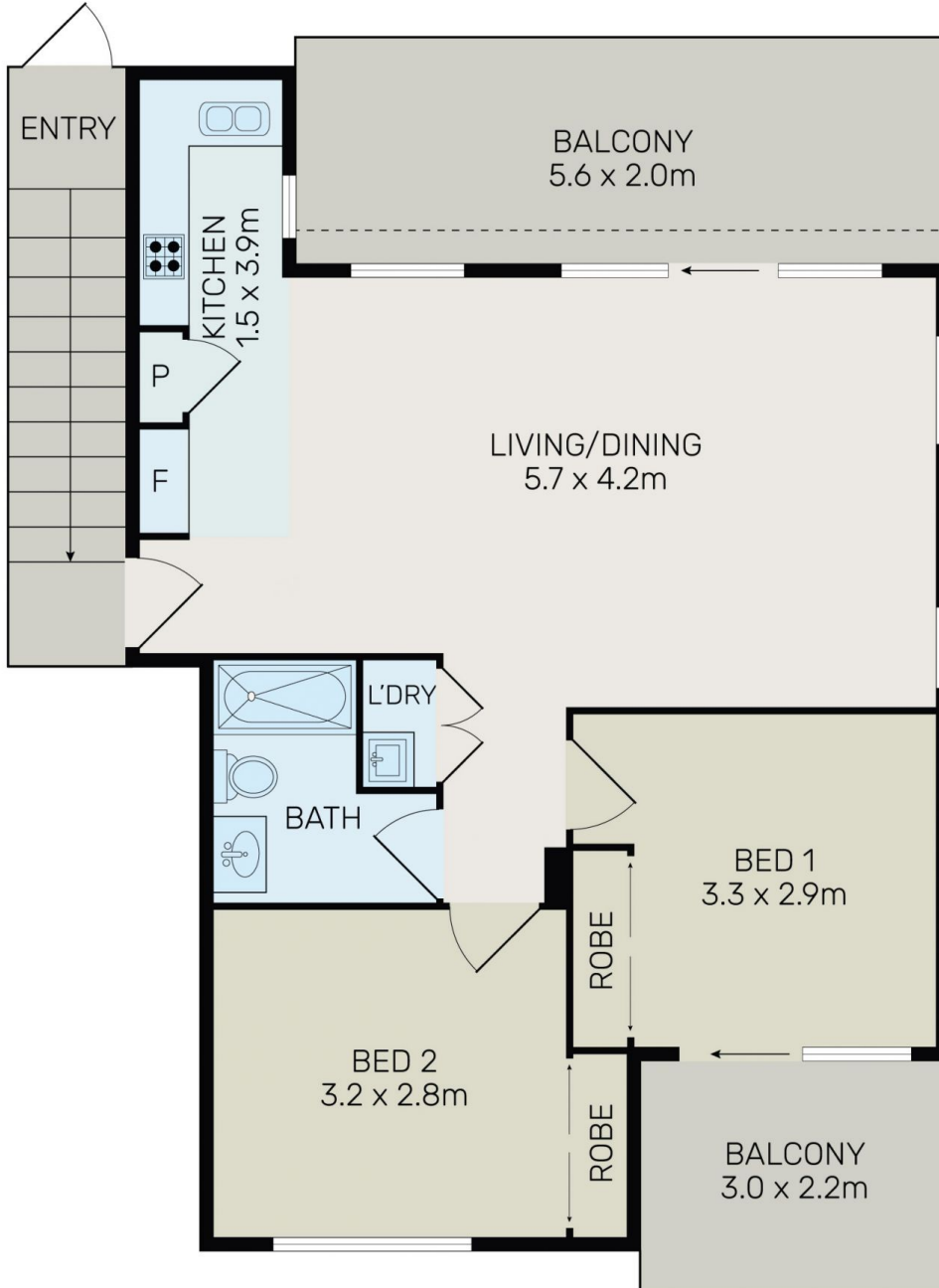
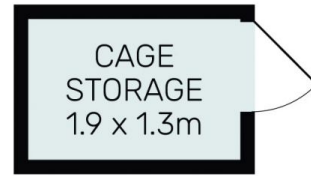
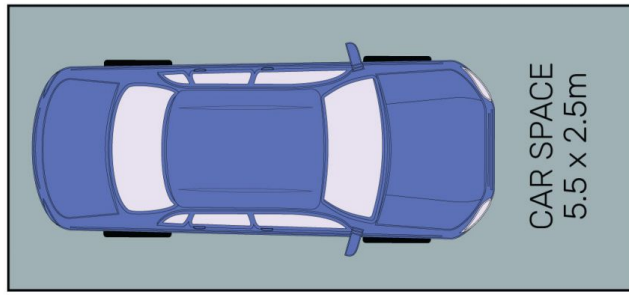
**View** : <https://www.legendproperty.com.au/sale/nsw/parramatta/rosehill/residential/unit/8645778>



**Alina Liang**  
0430 080 849

#### Features:

- 2 Bedrooms with built-in wardrobes, balcony to main.



All information contained herein is gathered from all sources we believe to be reliable. However we cannot guarantee its accuracy and interested parties should rely on their own enquiries.



14/10 Prospect Street, Rosehill